

The Courtyards at Banawa

PROJECT
PRIMER



Clubhouse & Swimming Pool



Location and Convenience

The site location in Jose Fortich St., Banawa within Cebu City makes it highly convenient to reach nearby schools, churches such as the Alliance of Two Hearts, groceries like Ruston's, Gaisano, Fooda, and hospitals: Cebu Doctors', Chang Hua, VSMMC, and it's location is close to the city center. It is highly accessible to both public transportation and privately owned vehicles.

Name of Project: The Courtyards at Banawa

Location: Banawa, Cebu City

Project Area: 5,123 sq.m.

Project Type: Walk-up Condominium

Number of Floors: 3

Number of Units: 129



Courtyards & Gardens

Facilities & Amenities:

- Grand entrance gate & guardhouse
- Open Courtyards per building cluster
- Manicured gardens
- Swimming Pool & Clubhouse
- Mini-playground & Strolling Lane
- Perimeter Fence
- Fire detection alarm system
- Underground electrical and telephone system
- 100% Back-up power generator
- Waste water treatment facility
- ISO-Certified Property Management

Vicinity Map



PHI Bldg., #311 V. Rama Ave., Cebu City

T: (63-32) 412-5656 | F: (63-32) 253-8025

M: +63 917 6336 245

E: phi.sales@primary.com.ph W: www.primaryhomes.com

Another pioneering development by:

PRIMARYHOMES
INCORPORATED

FLOORPLAN

Unit Classification & Unit Area

STUDIO TYPE UNIT



Studio A
22 sq.m. / 236 sq.ft.



Studio B
14 sq.m. / 150 sq.ft.

ONE BEDROOM TYPE UNIT



1 Bedroom A
34 sq.m. / 365 sq.ft.



1 Bedroom B
29 sq.m. / 311 sq.ft.



1 Bedroom C
26 sq.m. / 279 sq.ft.

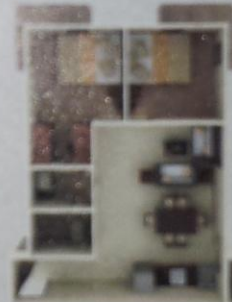


**1 Bedroom C
(w/balcony)**
29 sq.m. / 311 sq.ft.

TWO BEDROOM TYPE UNIT

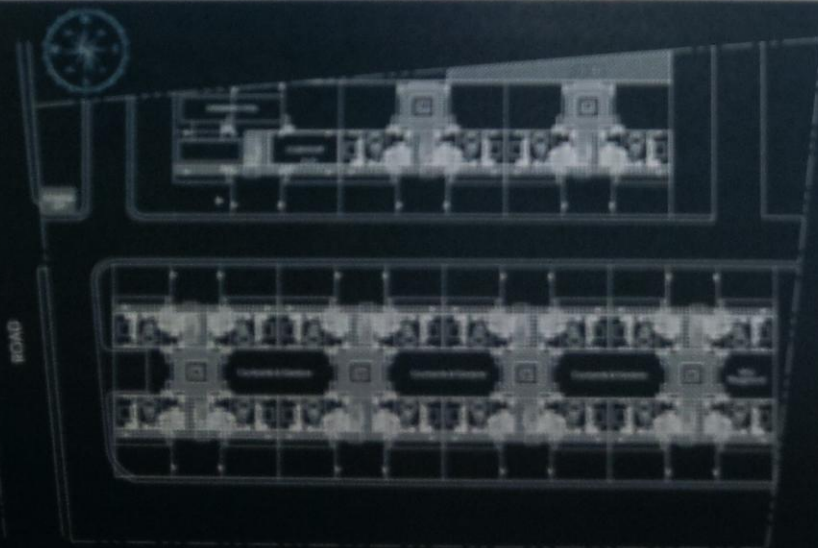


2 Bedroom A
52 sq.m. / 559 sq.ft.



**2 Bedroom B
(w/ balconies)**
58 sq.m. / 623 sq.ft.

SITE DEVELOPMENT PLAN



Unit Specifications:

- Painted walls, partitions & ceiling
- Tiled floors
- Tiled toilet & bath with bathroom fixtures & shower enclosure
- Provision of water heater outlet in the shower
- Bedroom closets
- Kitchen sink and counter top & cabinets
- Area for washing & dryer except for studio units